

Minimum system requirements for your Macintosh

- PowerPC-based Macintosh computer (includes iMac)
- Mac OS 8.5 or above
- Universal Serial Bus (USB) support
- CD-ROM drive
- 32 MB RAM or more
- 15 MB available disk space for scanning software

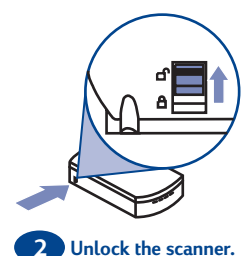
Contents: Your scanner comes with a CD-ROM disc package, parallel cable, USB cable, and power supply. For the Macintosh setup, you will only need the Macintosh CD-ROM disc, the USB cable, and the power supply.

1 STEP 1: Install the HP scanning software, image editor software & OCR software

- A. Insert the CD labeled "Macintosh version" into your CD-ROM drive. Double-click the HP scanning software Installer in the window that appears. (If the window does not appear, double-click the CD icon labeled HP Scanning Software.) The Easy Install option guides you through the standard installation.
- B. Follow the instructions on screen. When you see the Installation Readme window, click Print. Follow these printed instructions to complete your software installation. This will ensure that the additional software is installed correctly.

2 Step 2: Unlock the scanner

Slide the plastic lock on the side of the scanner up.

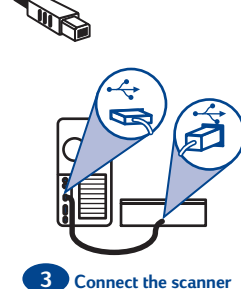


2 Unlock the scanner.

3 Step 3: Connect the scanner to your Macintosh

Note: You will use the USB cable to connect your scanner. All models include a parallel cable, but this cable is intended only for PC/Windows computers.

Connect one end of the USB cable to the USB port on the back of the scanner and the other end to the USB port on your Macintosh.

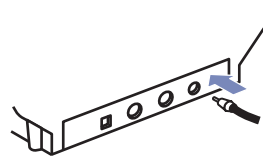


3 Connect the scanner to your Macintosh.

4 Step 4: Connect the power supply

Caution: Only use the power supply, cables, and accessories supplied with this scanner or those expressly approved by HP.

- A. Connect the power supply to your scanner.
- B. Plug the power cord into an electrical outlet. Plugging in the power cord turns on the scanner. (The scanner does not have an ON/OFF switch.)



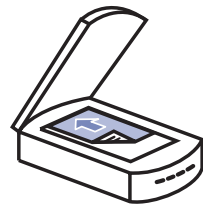
4a Connect the power supply.

Congratulations! Your scanner is installed, and you can try your first scan!

5 Step 5: Try your first scan

A. Place a document on the scanner glass and start a scan (preview scan):

- Push the Scan button on the front of the scanner.
- OR...
- Open the HP PrecisionScan Pro software (in the HP Scanning Software folder) and click the Preview Scan icon.



5a Place a document on the scanner glass

B. Select the area for your final scan:

- Draw a selection area by clicking and dragging diagonally with the crosshair to select the area you want.
- Note:** The scanning software automatically optimizes image quality for the area you select. For example, the exposure is automatically adjusted for the portion of the image you choose.

C. Make adjustments to the image or to the output type if necessary. Image adjustment options are available from the Tools menu.

Output Type options are available from the Output Type menu.

D. Complete your final scan by using one of two methods:

- **Save the scan to a file.** Click the Save icon. In the Save As dialog box, type a name and choose a location for the scan.
- **Print the scan.** Click the Print icon. In the Print dialog box, select your print options and print the scan.

Using scanner buttons



SCAN: Starts the HP scanning software.



COPY: Scans and prints a copy of your document through the HP Copy utility.



E-MAIL: Scans and starts your e-mail software. The scanned document is ready to send as an attachment.



FAX: Scans your file and sends it to your fax software through the HP Copy utility.

Need more help?

Help for your HP scanner and scanning software is just a mouse-click away. Go to the following support information in your HP Scanning Software folder (or use this information from the Help menu in the software):

- HP Installation Supplement: This Adobe Acrobat file provides help with installation, accessories setup, service, warranty, and product specifications information.
- PrecisionScan Pro User's Guide: This Adobe Acrobat file provides a complete online guide to using your scanner and getting great scanning results.
- Online Help: This QuickHelp file provides help when you need it from the software Help menu.
- Automatic Document Feeder User's Guide: This Adobe Acrobat file provides information about installing, using, and maintaining the optional Automatic Document Feeder accessory.
- Readme file: This SimpleText file provides late-breaking tips for your HP scanning software.

For technical support, drivers, scanning ideas and tips, go to: www.scanjet.hp.com

For HP's Customer Care Center, go to: www.hp.com/cposupport/eschome.html



HP ScanJet Scanner Macintosh Setup Guide

Adobe® and Acrobat are trademarks of Adobe Systems Incorporated which may be registered in certain jurisdictions.

Copyright © 2000
Hewlett-Packard Company
Printed in USA

Outside

Minimum system requirements for your Macintosh

- PowerPC-based Macintosh computer (includes iMac)
- Mac OS 8.5 or above
- Universal Serial Bus (USB) support
- CD-ROM drive
- 32 MB RAM or more
- 15 MB available disk space for scanning software

Contents: Your scanner comes with a CD-ROM disc package, parallel cable, USB cable, and power supply. For the Macintosh setup, you will only need the Macintosh CD-ROM disc, the USB cable, and the power supply.

1 STEP 1: Install the HP scanning software, image editor software & OCR software

- A. Insert the CD labeled "Macintosh version" into your CD-ROM drive. Double-click the HP scanning software Installer in the window that appears. (If the window does not appear, double-click the CD icon labeled HP Scanning Software.) The Easy Install option guides you through the standard installation.
- B. Follow the instructions on screen. When you see the Installation Readme window, click Print. Follow these printed instructions to complete your software installation. This will ensure that the additional software is installed correctly.

2 Step 2: Unlock the scanner

Slide the plastic lock on the side of the scanner up.

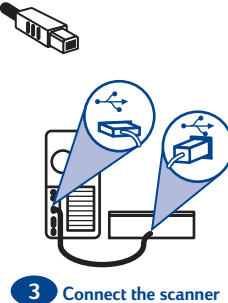


2 Unlock the scanner.

3 Step 3: Connect the scanner to your Macintosh

Note: You will use the USB cable to connect your scanner. All models include a parallel cable, but this cable is intended only for PC/Windows computers.

Connect one end of the USB cable to the USB port on the back of the scanner and the other end to the USB port on your Macintosh.

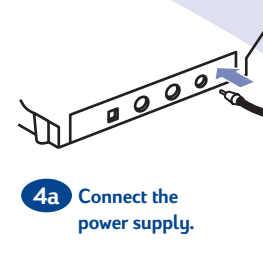


3 Connect the scanner to your Macintosh.

4 Step 4: Connect the power supply

Caution: Only use the power supply, cables, and accessories supplied with this scanner or those expressly approved by HP.

- A. Connect the power supply to your scanner.
- B. Plug the power cord into an electrical outlet. Plugging in the power cord turns on the scanner. (The scanner does not have an ON/OFF switch.)



4a Connect the power supply.

Congratulations! Your scanner is installed, and you can try your first scan!

5 Step 5: Try your first scan

A. Place a document on the scanner glass and start a scan (preview scan):

- Push the Scan button on the front of the scanner.
- OR...
- Open the HP PrecisionScan Pro software (in the HP Scanning Software folder) and click the Preview Scan icon.



5a Place a document on the scanner glass

B. Select the area for your final scan:

- Draw a selection area by clicking and dragging diagonally with the crosshair to select the area you want. **Note:** The scanning software automatically optimizes image quality for the area you select. For example, the exposure is automatically adjusted for the portion of the image you choose.

C. Make adjustments to the image or to the output type if necessary. Image adjustment options are available from the Tools menu.

Output Type options are available from the Output Type menu.

D. Complete your final scan by using one of two methods:

- **Save the scan to a file.** Click the Save icon. In the Save As dialog box, type a name and choose a location for the scan.
- **Print the scan.** Click the Print icon. In the Print dialog box, select your print options and print the scan.

Using scanner buttons



SCAN: Starts the HP scanning software.



COPY: Scans and prints a copy of your document through the HP Copy utility.



E-MAIL: Scans and starts your e-mail software. The scanned document is ready to send as an attachment.



FAX: Scans your file and sends it to your fax software through the HP Copy utility.

Need more help?

Help for your HP scanner and scanning software is just a mouse-click away. Go to the following support information in your HP Scanning Software folder (or use this information from the Help menu in the software):

- HP Installation Supplement: This Adobe Acrobat file provides help with installation, accessories setup, service, warranty, and product specifications information.
- PrecisionScan Pro User's Guide: This Adobe Acrobat file provides a complete online guide to using your scanner and getting great scanning results.
- Online Help: This QuickHelp file provides help when you need it from the software Help menu.
- Automatic Document Feeder User's Guide: This Adobe Acrobat file provides information about installing, using, and maintaining the optional Automatic Document Feeder accessory.
- Readme file: This SimpleText file provides late-breaking tips for your HP scanning software.

For technical support, drivers, scanning ideas and tips, go to: www.scanjet.hp.com

For HP's Customer Care Center, go to: www.hp.com/cposupport/eschome.html

Inside